

# Arkansas State Capitol

## Open Call for Exhibit Proposals

Thank you for your interest in submitting an exhibit proposal to the Arkansas State Capitol. We welcome ideas from all sources that provide visitors with noteworthy and unique insight into Arkansas-related themes, people, places and events.

Capitol staff will work with the applicant to establish the scope of the exhibit, provide oversight on research, and assist with design and installation. Please note that the Arkansas Secretary of State's Office maintains curatorial oversight for all projects accepted.

### **Exhibit Details**

Exhibits will be located in the 4th Floor Gallery and installed for approximately 6 to 8 weeks.

The exhibition space is approximately 400 square feet, with a standard picture hanging rail at 8 feet high. We can offer a suite of five display cases in various sizes with locking vitrines. It is camera surveilled and uses LED and natural lighting.

The Capitol staff has a limited number of display materials depending on the design needs of the exhibit:

- Black metal frames for hung panels. (Various sizes)
- Hanging hardware (S hooks, picture hanging wire, etc.)
- Display props for artifacts
- Digital kiosk for audio/video

Exhibit text should be in a completed draft form and outlined with images and captions when submitted for panel fabrication. Images should be high resolution, at least 300 dpi, and saved as jpg or tiff files.

The applicant will be responsible for conducting research for the exhibit, as well as finding images and audio/video materials and gathering artifacts to be displayed. During the concept and development phase, Capitol staff can provide guidance on archival and library research to find resources. The staff will also provide final review of all text and materials and reserves the right to edit content to maintain suitability for the diverse audience in order to adhere to inclusivity and accessibility.

The level of the applicant's ability to donate time, transportation and provide financial support to their own curatorial process will not impact the evaluation of the information and material submitted. Given the many and varied costs involved in the development of new exhibits we appreciate consideration and assistance in securing the needed financial support that the applicant's work requires.

## **Application**

All applications are submitted online at:

**<https://www.sos.arkansas.gov/state-capitol/state-capitol-exhibits/open-call-for-exhibit-proposals>**

Submitting a proposal does not guarantee acceptance.

Please fill out the following form with as much detail as possible to have your proposal considered for review. If you have any questions during the application process, feel free to reach out to:

Jennifer Hughes, Capitol Curator

jen.hughes@sos.arkansas.gov

501-683-1526

or

Michael Higgs, Assistant Capitol Curator

michael.higgs@sos.arkansas.gov

501-435-3293

### **Application information includes:**

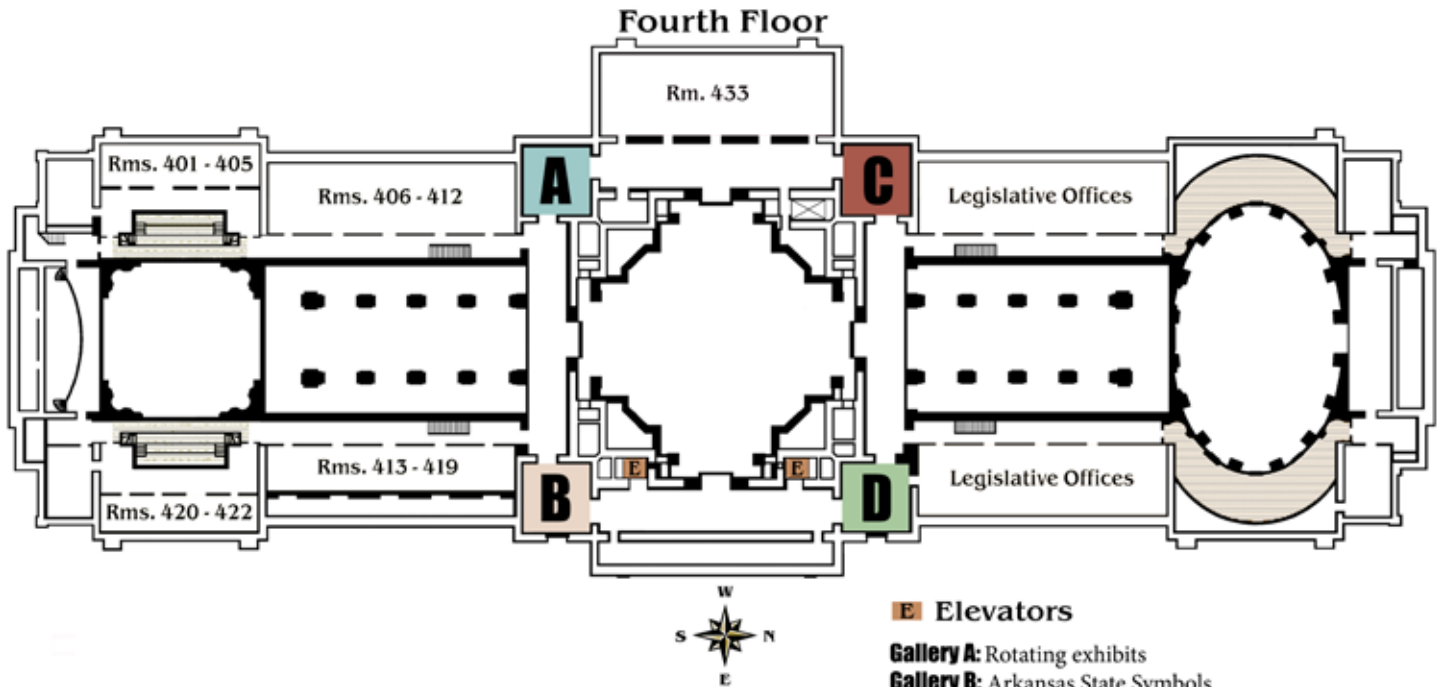
#### **Contact Information**

- Name
- Email (The Capitol staff will use this email to contact you with any follow-up questions or updates regarding your proposal)
- Phone Number
- Organization (if applicable)
- Applicant's position in organization

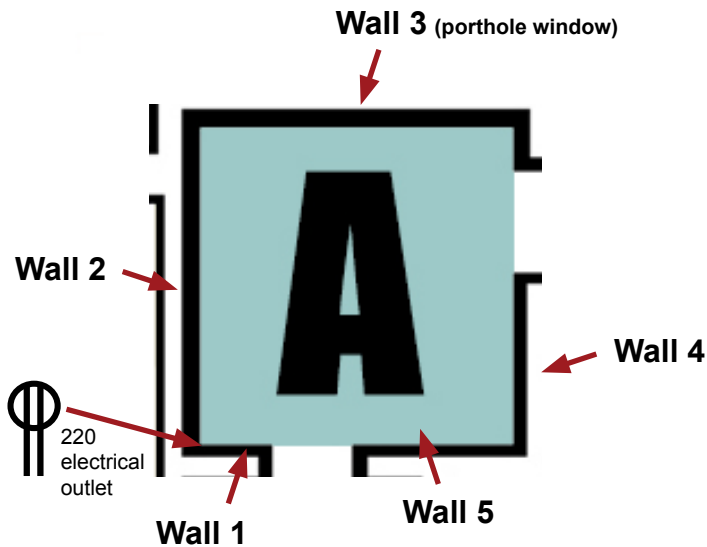
#### **Exhibition Details**

- Exhibit Title
- Please describe your exhibit idea or plan. Include media, technique, theme or context of the proposed exhibition. It should also estimate number of objects or artworks and any specific technical, spatial or special requirements regarding the installation of the work or exhibition. If more detail is required, upload a separate document below.
- How does this exhibit relate to Arkansas?
- Proposed start date (depending on existing schedule, specific dates are not guaranteed.)
- Which audience will this exhibit attract?
- Has this exhibit been shown anywhere else? If so, where?
- Optional: Upload up to three files or materials that support your proposal, such as writing samples, images, design concepts, etc.

# Fourth Floor Gallery (Gallery A)



- Gallery A:** Rotating exhibits
- Gallery B:** Arkansas State Symbols
- Gallery C:** Capitol History Museum (Planned)
- Gallery D:** Call of Duty-Arkansans at War





## Gallery A Features

- Picture railing for hanging around perimeter 8' high
- Five locking display cases for objects and documents (See sizes on next page)
- Audio/Visual kiosk
- 24-hour video surveillance by Capitol Police
- Natural light through porthole window and LED pendant lamp (no spotlights)
- One 220 electrical outlet
- Floor Area: Approximately 400 sq ft

## Wall Dimensions (approximate width)

- 1: 32"
- 2: 240"
- 3: 240"
- 4: 120"
- 5: 120"

	<b>Deck</b>	<b>Vitrine (Inside height clearance)</b>
	<p>47" x 47" Fabric covered Double Slope</p>	<p>6"</p>
	<p>47" x 23" Fabric covered Single Slope</p>	<p>7-9"</p>
	<p>47" x 23" Fabric covered Flat</p>	<p>34"</p>
	<p>47" x 23" Wood Flat</p>	<p>26"</p>
	<p>21" x 21" Fabric covered Flat</p>	<p>18"</p>

## Installation View

